

3D PAPER MODEL

Mini National Building Museum

The historic home of the National Building Museum is one of the great American buildings of the 19th century and one of Washington, D.C.'s most spectacular works of public architecture. Built between 1882 and 1887, it was originally intended as the U.S. Pension Bureau's headquarters. U.S. Army Quartermaster General Montgomery C. Meigs was appointed as the building's architect and engineer. In 1980, almost a century after it first opened, 401 F Street NW was designated by Congress as the home of the new National Building Museum.


Instructions

Follow these instructions to build your very own paper model. Don't have a color printer? Print the black-and-white image (page 3), then use your pencils, crayons, and markers to match the color version—or let your imagination run wild!

1. Cut on all the white dotted lines  and cut away the white area. 

3. Fold on all the dark red lines , starting at the middle of the card.

4. Connect the top of the roof and tape the inside so it holds together.  

5. Connect the flaps of the upper roof walls. 

6. Put the two walls together and tape them together.

7. You made it!

8. Take a picture of your model and share it on social media.

Tag us or use the hashtag #NBMPapermodels.




Important Message


Because of the ongoing coronavirus pandemic, the Museum is closed until further notice. But the website for our award-winning Museum Shop—nbmshop.org—remains open! We look forward to sharing good news with you about our reopening as soon as possible.

Connect with us online

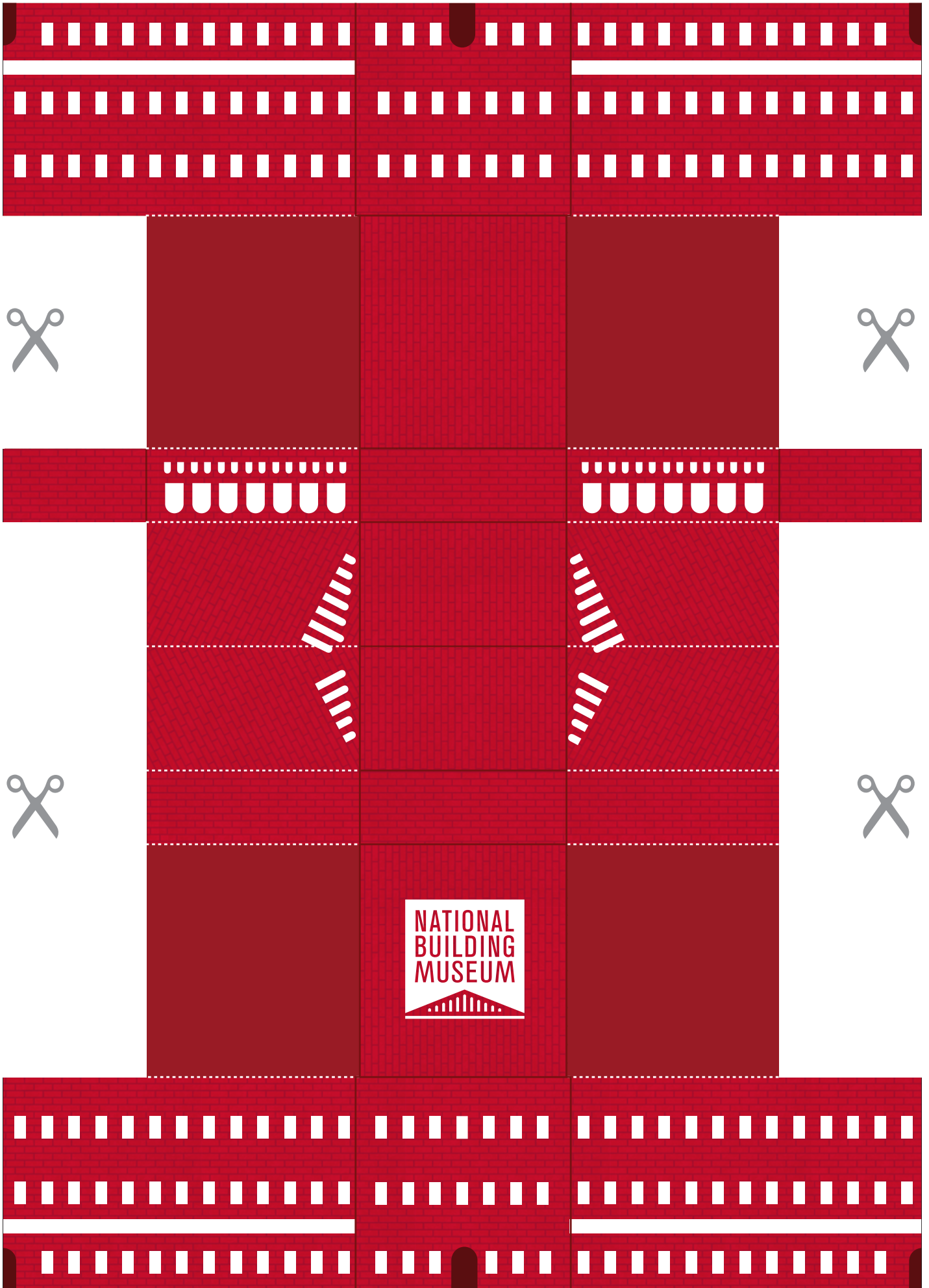
 www.nbm.org

 facebook.com/NationalBuildingMuseum

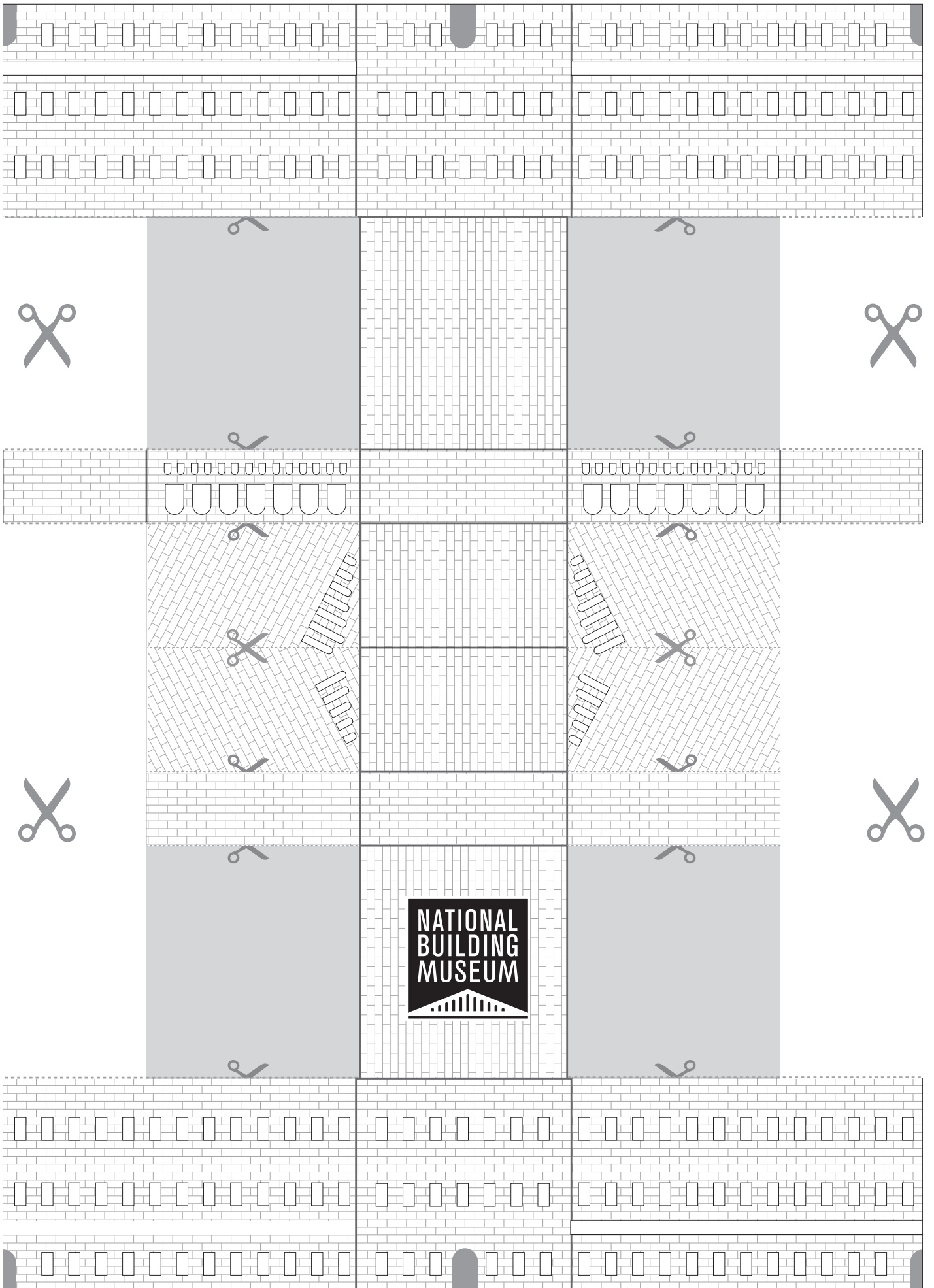
 [@BuildingMuseum](https://twitter.com/BuildingMuseum)

 [@NationalBuildingMuseum](https://instagram.com/NationalBuildingMuseum)





NATIONAL
BUILDING
MUSEUM



NATIONAL
BUILDING
MUSEUM